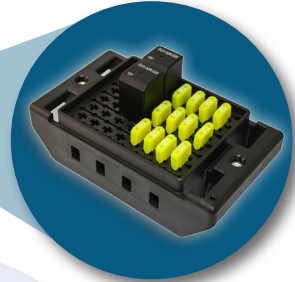




Learn how the 48-way BRIC® helped a leading bus manufacturer save 45 minutes of labor and valuable real estate within their electrical panel.



BRIC® by BRIC®

With Glaval Bus, a Division of Forest River Inc.

Our engineering team worked with a leading bus manufacturer to simplify their main electrical panel saving them valuable time and resources. The Chief designed BRIC® paved the way for a complete reconfiguration of the “main brain” of their speciality shuttle buses.

The Challenge

Multiple components meant multiple challenges. Each component required space in the vehicle, resources to manage inventory, and warranty expenses per part. Further, assembly costs made the OEM inefficient. They needed to simplify.

Seeking a Solution

Glaval presented the dilemma to Chief. “Our Chief Enterprises sales contact introduced us to the BRIC® years ago when it was in prototype. We fell in love with it on the spot.”

“We fell in love with [the BRIC®] on the spot.”

The BRIC® Made Sense

With only minimal changes in fuse sizes and the number of fuses, Glaval now had a single unit that could be easily pulled off-the-shelf and plugged into the vehicle.

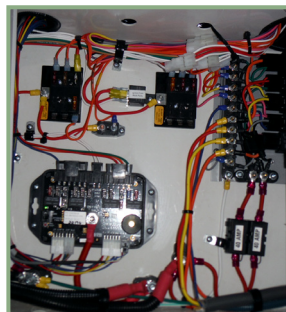
Most importantly, the BRIC® tackled the OEM’s inefficiencies. The BRIC® enabled Glaval to reduce labor by 45 minutes per unit, while saving space and minimizing warranty issues that may have arisen due to missed wiring. Although, “the Glaval staff was initially hesitant about taking on a new product, after seeing the BRIC®’s capabilities, how much space it saved in our electrical panel, along with the clear cost savings, making the decision to switch was a no-brainer.”

“45 minutes of labor saved per unit.”

Working with Chief Enterprises

“From Jeff Burger, who originally introduced to the BRIC®, to our sales engineer John Herzog, the process of working with Chief was seamless. I highly recommend the BRIC® and working with Chief is always a pleasure.”

Before



After

