



BRIC Fusion



Breathable & Robust Interconnection Center – Fusion

Introducing the newest member of the BRIC® family—the Fusion. With 20 different possible configurations, the Fusion is completely customizable and has the ability to house both low and high amp components by way of ultrasonic welded inserts. The Fusion sports the same rugged and compact build as the 84-way BRIC® and is IP67 sealed.

Specifications

Dimensions:	155.3 x 62.0 x 65.0 mm
Number of Cavities:	See Insert Options on Reverse Side
Mounting:	M6 Steel Threads
Temperature Range:	-40 to 125° C Ambient
Ingress Protection Rating:	IP67 Water & Dust Protection
Terminal System(s):	TE MCP 2.8 TE MCP 6.3 TE MCP 9.5 Metri-Pack 800 Series

Competitive Advantages

- Hydrophobic Vent
- IP67 Water & Dust Protection
- Completely Configurable
- Ultrasonic Welded
- Sleek Body Design
- High Strength Reinforced Body
- High Impact Plastic Cover
- One-hand Cover Release
- M6 Steel Nuts for Mounting
- Custom Labels & Laser Marking
- Low Minimum Order Quantities
- Diode Key Available
- Tether for Cover Available
- Mounting Brackets Available

BRIC is a registered in the U.S Patent and Trademark Office

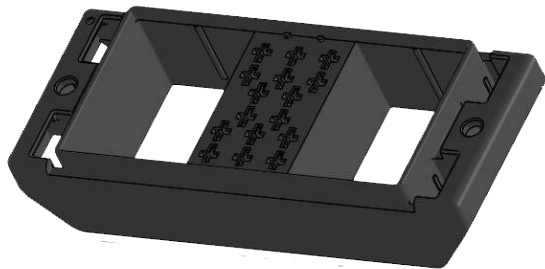


Configurations & Accessories

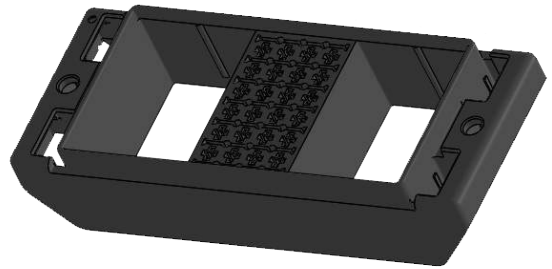
Count on Chief Enterprises for customized components engineered to your specifications. We can deliver pre-assembled parts ready for you to install.

The Fusion joins the BRIC® family of three sizes of 280 footprint modules as a versatile high amp option for the on and off-road OEM. To build your Fusion, choose between two frames and two of the four below inserts to be ultrasonic welded. Cover options mirror the 84-way BRIC®, with hydrophobic vents, CPAs, and laser marking.

Configurations: Frames



16 ATO CAVITIES



24 ATM CAVITIES

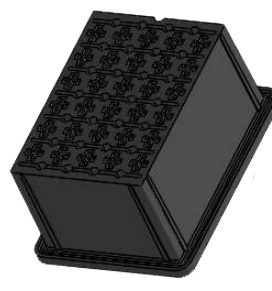
Configurations: Inserts



2 MAXI FUSES & 1 MAXI RELAY



4 MAXI FUSES



30 ATM CAVITIES



6 ATO CAVITIES & 1 MINI ISO RELAY

Cover Options



HYDROPHOBIC VENT



COVER POSITION ASSURANCE



LASER MARKING

»For more information about the entire BRIC® family contact us today or visit us at bric.chiefent.com